



**FULLY AUTOMATIC**  
**NON-CONTACT TONOMETER**

QUICK SPEED  
 3D AUTO-TRACKING  
 AUTO MEASUREMENT  
 SOFT AIR PUFF, SAFTY,  
 PACHYMETER+TONONME  
 TER

**Non-contact tonometer**  
**SK-5000A/B**

|                               | SK-5000A   | SK-5000B  |
|-------------------------------|--|---|
| Measurement mode              | Fully automatic/Automatic/Manual   |   |
| Corneal thickness measurement | Not support  | Support<br>Measurement range-CCT:400-800um<br>Measurement increment-CCT:10um<br>Light Source:Blue LED |
| Display                       | 8-inch 1024*600 color touch screen, support up and down 180°,left and right 60°fip |   |
| Fixation light                | internal fixation light , support  |   |
| Measurement accuracy          | 1mmHg(0.133Kpa)  |   |
| Measurement range             | 0-60mmHg(0-8Kpa)<br>Include automatic switching between 30/60mmHg                  |   |
| Printer                       | Built-in thermal printer, automatic paper cutting                                  |   |
| Data output/input             | Input: USB; Output:LAN/RS232C  |   |
| Size and weight               | 500*300*500;<25kg  |   |

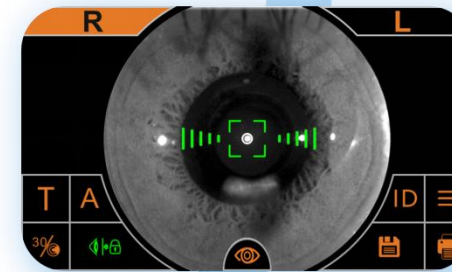




Electric chin rest



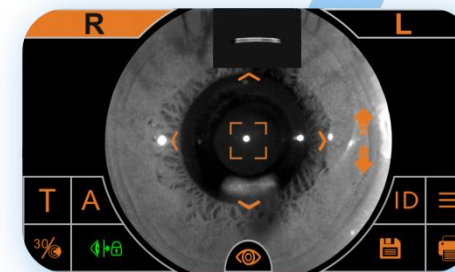
SK-5000B supports corneal thickness measurement  
More functions



Auto alignment  
Auto focus



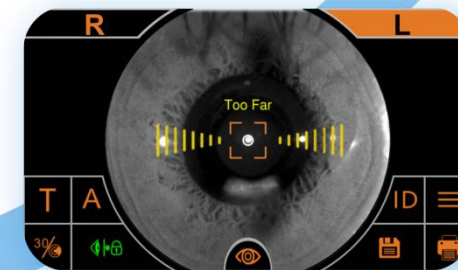
Fully automatic mode  
One touch  
You can get OS&OD data  
It also supports semi-automatic/manual mode



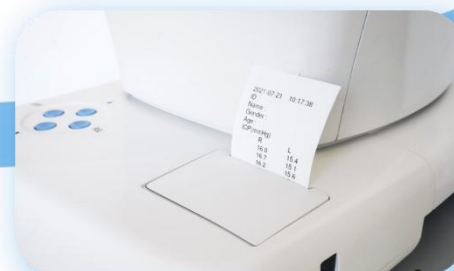
Corneal thickness measurement  
Auto soft air puff



Support air puff detection after turn on  
Support safety limit setting  
Safer equipment use and operation



Auto switch OS&OD



Print report  
Auto paper cutting



8 inch color capacitive touch screen  
Can be flip up and down 180 °  
Flip right and left 60°  
Operation and observation are more convenient



ONE CLICK

FULLY  
AUTOMATIC

