

briot attitude3

# Enhance Your Productivity with Smart Edging





# Briot Attitude 3: speed up turn around time for your clients

The Briot Attitude 3 edging system raises the bar for what is possible in your in-house finishing workshop and offers a truly customized eyewear experience. Briot Attitude 3's incredible accuracy and speed makes it the perfect lens processing solution for any modern optical practice.

#### An ergonomic design that makes sense

With special attention paid to even the smallest of details, Briot Attitude 3 was designed to be ergonomic and easy to use. This sleek system was also designed to fit into compact spaces.

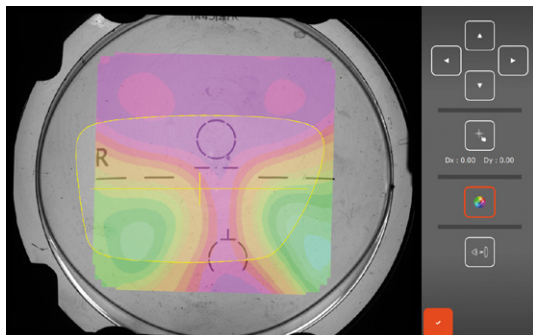
#### Intuitive Touch Screen

The intuitive interface includes a user friendly touch screen that allows users to swipe between various functionalities.

#### Fast & Easy Finishing Process

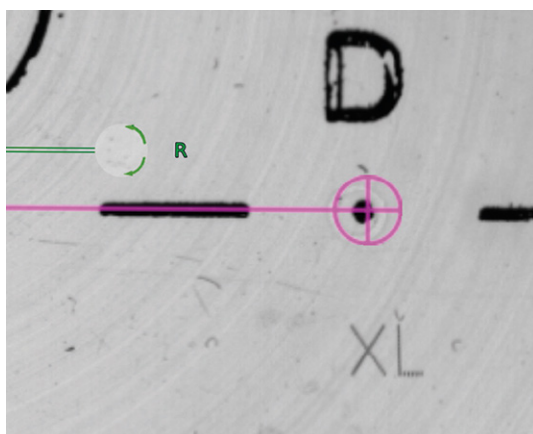
Briot Attitude 3 reduces processing time for job preparation including tracing, centering, and blocking. The risk of breakage is greatly reduced through increased automation, including power measurement. The Briot Attitude 3 is one of the fastest finishing systems available today.

# See the Actual Lens Map and Power Channels



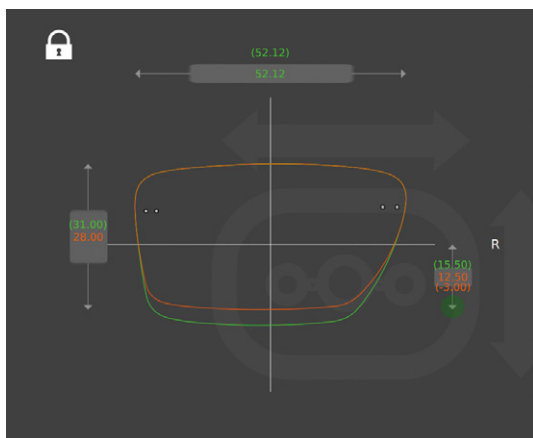
## WAVEFRONT TECHNOLOGY

The Attitude blocker combines the best of both worlds with parallax free centering and wavefront technology. With Shack Hartmann technology, the actual lens design, layout, and power map are visible. With this information, the best visual correction for the wearer can be taken into account during the centering and blocking process. By selecting any area of the lens, the optical power and prism are displayed, taking away the mystery of even the most advanced digital custom lens designs.



## LASER ENGRAVINGS

Using a high-definition camera, you can see the detailed laser engravings on progressive lenses. In cases where there is deviation between the print layout or lens engravings, the user can decide on the best centration.



## INTELLIGENT SHAPE MODIFICATION

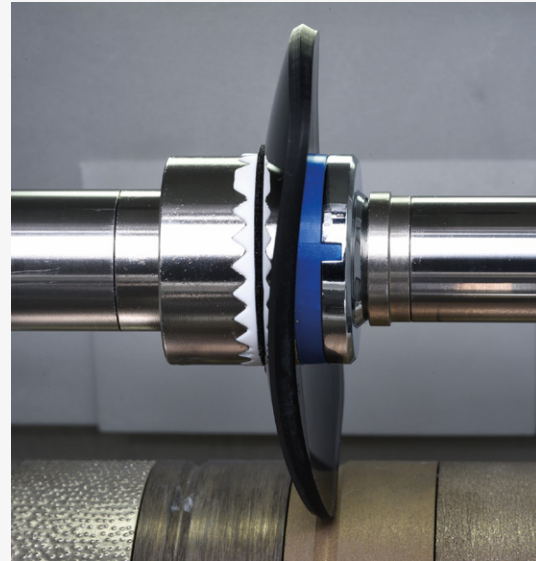
When performing modifications to the shape, Briot Attitude 3 blocker shows the actual lens map in the background. This allows the user to see where the power channels will be located within the new shape or size, and enhances the wearer's visual comfort and lens performance.

# Ultimate Edging

## Fast & Secure Process

### SMART EDGING WITH TORQUE MANAGEMENT SYSTEM (TMS)

Briot Attitude 3 intelligently adjusts its edging cycles to the thickness of the lens and material. New sensors and improved software maintain constant pressure on the lens, thus reducing edging time with no risk of misalignment, especially on hydrophobic lenses.



## Even for Athletic Eyewear

### TRUESCAN: TRUE HIGH CURVE TRACER

With truescan technology on Briot Attitude 3 blocker, you can trace extreme wrap frames very easily. Tracing is geared for speed while the mechanics allow a very soft touch on frames to avoid any type of deformation. In addition, TrueFit technology calculates curvatures to ensure seamless lens-frame pairing.



### HIGH CURVE FINISHING

This feature is customizable on any area of the lens and can be combined with any bevel curve, including the mini bevel. This advantage allows for high quality results and facilitates the treatment of frames with thick nasal or temporal areas (up to 9 base curve).

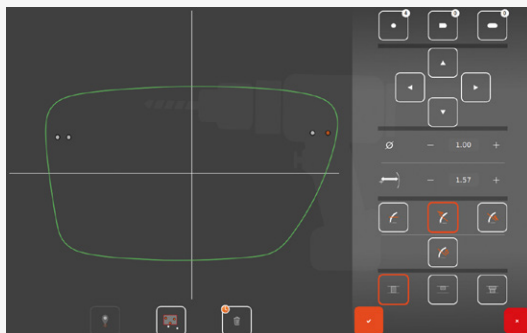


# Gravitech Tracing is as Easy as Photocopying



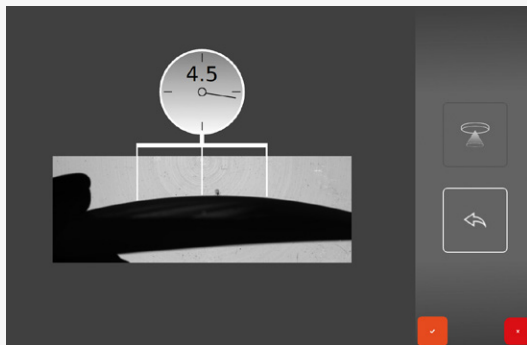
## GRAVITY BASED OPTICAL TRACING

By placing the lens face down, Briot developed a patented method for optical tracing using the gravity point of the lens. The Briot Attitude 3 blocker is capable of capturing even the most complex shapes, including drill holes, with exceptional precision in just seconds. The reproduced shape comes out perfect even on lenses with higher base curves.



## DRILL HOLE CUSTOMIZATION

Working with drill holes has never been easier. With the intuitive interface and intelligent software, hole placement is fast, easy, and precise. In addition, select frame manufacturer files can be uploaded with shape and drill data.



## DIGITAL LENS CLOCK

The Digital Lens Clock feature measures the front base curve of the lens in a matter of seconds. Then this data are used to achieve a perfect finish.

# Technical specifications

Briot Attitude 3 was designed by our engineers in Normandy, France, and assembled in our local workshops with the greatest care. Each component is crafted with rigorous quality-control protocols at each stage of the process. All parts are guaranteed for up to 2 years and backed by rapid intervention, ensuring you maximum uptime and a long lifecycle for your machine.

## DIMENSIONS :

|         |                          |
|---------|--------------------------|
| WIDTH   | 360 mm (14.2 in)         |
| DEPTH   | 565 mm (22.2 in)         |
| HEIGHT  | 590 mm (23.2 in)         |
| WEIGHT  | 29.5 kg (65 lbs)         |
| VOLTAGE | 100 V-240 V / 50Hz-60 Hz |

Meets following directives  
CEM 2004/108/CEE,  
EN 55022 « Classe B »,  
EN 61000 - 6 - 2,  
EN 61000 - 6 - 3,  
2006/95/CEE, EN 61010-1  
Standards UL Version US 115V :  
UL 61010-1; CAN/CSA-C22.2  
N°61010-1

## DIMENSIONS :

|         |                        |
|---------|------------------------|
| WIDTH   | 510 mm (20.1 in)       |
| DEPTH   | 615 mm (24.2 in)       |
| HEIGHT  | 570 mm (22.4 in)       |
| WEIGHT  | 69 kg (151.8 lbs)      |
| VOLTAGE | 115V/230V<br>50hz/60hz |

Meets following directives  
2004/108/CEE; 2006/95/CEE;  
2002/95/CEE; 2006/42/CEE;  
EN 61000-6-3  
(EN 55022 Class B);  
EN 61000-6-2; IEC 61010-1.

## ATTITUDE - Tracer / Blocker

### Frame / Demo Lens Tracing

- Frame tracing, demo lenses, patterns and edged lenses.
- Special technology to measure wrap frames.
- TrueScan: recognition of the 4 frame dimensions, including the frame groove position, giving better fit of the lens into the frame.
- Tracing right eye and/or left eye: transfer of one side only or both eyes.
- Measurement of the frame PD and bridge.
- Shape displayed on screen (scale 1, 2).
- Maximum measurable diameter 70 mm.
- Gravitech 2.0 superior optical recognition system including accurate drill hole detection
- Digiform included: advanced shape modification with overlaid lens and map display
- Intuitive shape axis modification
- Extensive, alphanumeric Library including 5000 Jobs & 10000 Shapes (Patterns, Drilled Shapes, etc.) with advanced search functions.
- Automatic data transfer from the blocker to the edger.
- Create new shapes from existing ones using the useful drill import & export functions

### Centering & Blocking

- Supported Decentration Types  $\frac{1}{2}$  PD,  $\Delta x - \Delta y$ , boxing height or frame height.
- Decentering: 0.05 mm step.
- Automatic Detection of Single Vision, Bifocal and Progressive Lenses
- Power Measurement based on Wavefront Technology for Single Vision Lenses
- Mapping including Power Measurement Point-to-Point for Progressive and Single Vision Lenses
- Controlled blocking pressure.

### Connections

- Serial (RS232) and Ethernet (LAN) connection available
- Communication OMA
- USB port for upload of shapes / bar code scanner

## ATTITUDE 3 - Edger

### Features

- Torque Management System (TMS) advanced edging cycle
- Plastic Version: Four 90 mm edging wheels: all plastics (CR-39, polycarbonate, Trivex, high index), bevel and rimless finishing, bevel and rimless polishing, tilted bevel wheel.
- Mineral Version: Four 90 mm edging wheels: all plastics and mineral, bevel and rimless finishing including TBS, rimless polishing, TBS wheel.
- Integrated drilling function: Countersunk holes, notches, blind or open oblong blind, or open oblong holes, special rectangular functions. Tilted drilling angles depending on program from 0° to 30°.
- Tracing prior to roughing with accuracy of 50 Q. Feeling front and rear curvature and lens thickness.
- Visual preview of lens on request, before starting roughing cycle.
- Bevels width / height options: Normal, Mini-Bevel, Tilted Bevel, Mini-Tilted Bevel, Partial Bevel.
- 6 different bevels : front face, percentage, Truefit,  $\delta$  (base curve), automatic, customized.
- Minimum edging diameters: rimless finish 17 mm, grooved finish 18.2 mm, bevel finish 18.6 mm, safety bevel finish 21 mm.
- Grooving Programs: front face, percentage, customized (manual), automatic with adjustable depth and width. Grooving angle adjusted automatically according to the curve and the height of the lens.
- Customized safety bevel (front face, rear face).
- Partial Processing (Bevel-Groove / Groove-Groove / Bevel-Flat / Flat-Groove)



INNOVATION TO UNLOCK YOUR POTENTIAL

**VISIONIX US**

160 Eisenhower Lane North, Lombard, IL 60148

US: +1 (800) 729-1959

Canada: +1 (905) 760-2420

[contact.us@visionix.com](mailto:contact.us@visionix.com)

[www.visionix.com/us](http://www.visionix.com/us)